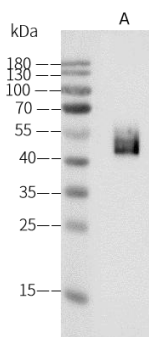


Chikungunya virus (CHIKV) (strain SL-CK1) E2 / Envelope 2 Antibody, Mouse MAb

Catalog Number: CHIKV-AM1006

GENERAL INFORMATION	
Immunogen:	Recombinant Chikungunya virus (CHIKV) (strain SL-CK1) E2 / Envelope 2 Protein
Preparation	This antibody was produced from a hybridoma resulting from the fusion of a mouse myeloma with B cells obtained from a mouse immunized with purified, recombinant Chikungunya virus (CHIKV) (strain SL-CK1) E2 / Envelope 2 (Catalog#40440-V08B; ADG95913.1; Ser326-Gln666). The IgG fraction of the cell culture supernatant was purified by Protein A affinity chromatography.
Ig Type:	Mouse IgG2a
Clone ID:	32
Specificity:	Chikungunya virus (CHIKV) (strain SL-CK1) E2 / Envelope 2 Has cross-reactivity in ELISA with CHIKV (UVE/CHIKV/2024/RE/CNR_79903) E2 Protein
Formulation:	0.2 µm filtered solution in PBS
Storage:	This antibody can be stored at 2°C-8°C for one month without detectable loss of activity. Antibody products are stable for twelve months from date of receipt when stored at -20°C to -80°C. Preservative-Free. Avoid repeated freeze-thaw cycles.
APPLICATIONS	
Applications:	WB,ELISA
	IHC, FCM, IF, IP et al. applications haven't been validated. (Antibody's applications haven't been validated with corresponding virus positive samples. Optimal concentrations/dilutions should be determined by the end user.)
RECOMMENDED CONCENTRATION	
Western Blot	WB: 1:500-1:2000
ELISA	ELISA: 1:1000-1:2000

Please Note: Optimal concentrations/dilutions should be determined by the end user.



Anti-CHIKV Envelope 2 mouse monoclonal antibody at 1:1000 dilution

Sample: Recombinant Protein 10 ng

Lane A: Chikungunya virus (CHIKV) (UVE/CHIKV/2024/RE/CNR_79903) E2 / Envelope 2 Protein

Secondary

Goat Anti-Mouse IgG (H+L)/HRP at 1/10000 dilution

Developed using the ECL technique.
Performed under reducing conditions.